

LISTING HIGHLIGHTS

OFFICE: 807.468.3541 TOLL FREE: 800.528.8848 FAX: 807.468.4676
138 MAIN STREET S. | KENORA ONTARIO | P9N 1S9 | CABINCOUNTRY.COM



Lot 5 Bell's Point Subdivision
PIN: 42134-0556
Black Sturgeon

Lot

- 3.48 acres
- South-West Exposure
- 405.5 Feet of Waterfront
- Variable Terrain with mature forest

Services: Hydro at Lot Line

Access: Road access

Taxes: \$2,119.83 in 2019

Comments: Build your dream home or cabin here!

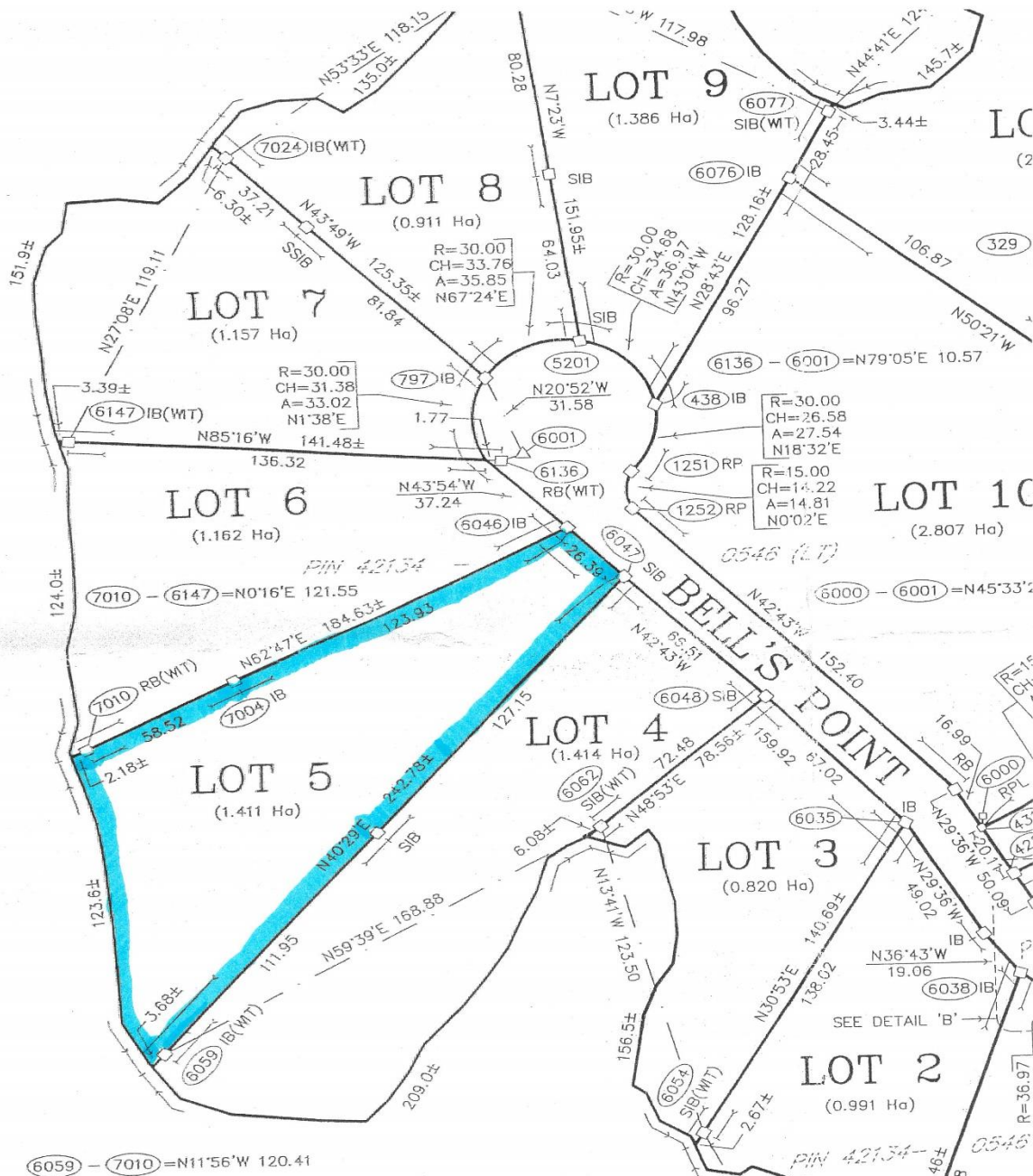
File 8068

\$219,000

52°W	-	80.2
28°W	-	66.6
14°W	-	65.3
00°W	-	47.5
03°W	-	30.6
52°W	-	16.3
58°W	-	13.0
06°W	-	25.5
58°E	-	44.9
39°E	-	59.8
12°E	-	76.2
32°E	-	94.1
48°E	-	115.7

TIES TO
ER'S EDGE OF
STURGEON LAKE

SIB(exp)(WT)	(436)	
79°10'E	—	34.7
12°19'E	—	24.3
19°18'E	—	11.3
14°19'W	—	18.5
27°04'W	—	33.2
40°52'W	—	45.8
51°21'W	—	52.3
44°50'W	—	62.0
42°13'W	—	73.0
41°28'W	—	82.3
47°09'W	—	94.7
49°58'W	—	95.2
51°46'W	—	104.5
61°09'W	—	114.4
70°20'W	—	106.3
80°32'W	—	106.8
80°04'W	—	109.8
81°21'W	—	111.4
82°50'W	—	103.0
87°58'W	—	103.1
80°34'W	—	104.5
75°26'W	—	110.0
70°28'W	—	120.1



TIES TO
WATER'S EDGE OF
BLACK STURGEON LAKE

FROM	SIB(WIT) (6054)
S56°59'E	- 20.2
S43°18'E	- 19.1
S10°54'E	- 12.1
N67°59'W	- 2.9
N59°53'W	- 14.7
N43°29'W	- 24.7
N45°15'W	- 30.0
N27°39'W	- 40.6
N19°47'W	- 50.4
N12°32'W	- 59.7
N05°55'W	- 67.4
N03°55'W	- 78.0

omatics Inc.

3.8516 | F +1.807.468.7282
West South
P9N 1S9



The new identity of Trow Geomatics

DINGS • EARTH & ENVIRONMENT • ENERGY •
TRIAL • INFRASTRUCTURE • SUSTAINABILITY •

EF: SEAN CASEY, RANDY HANSTEAD, LEE REPKO

BY: ERIC RODDY, O.L.S., C.L.S.

1002_SUBDIVISION PLAN DRAWN BY: KATELIN BEAL